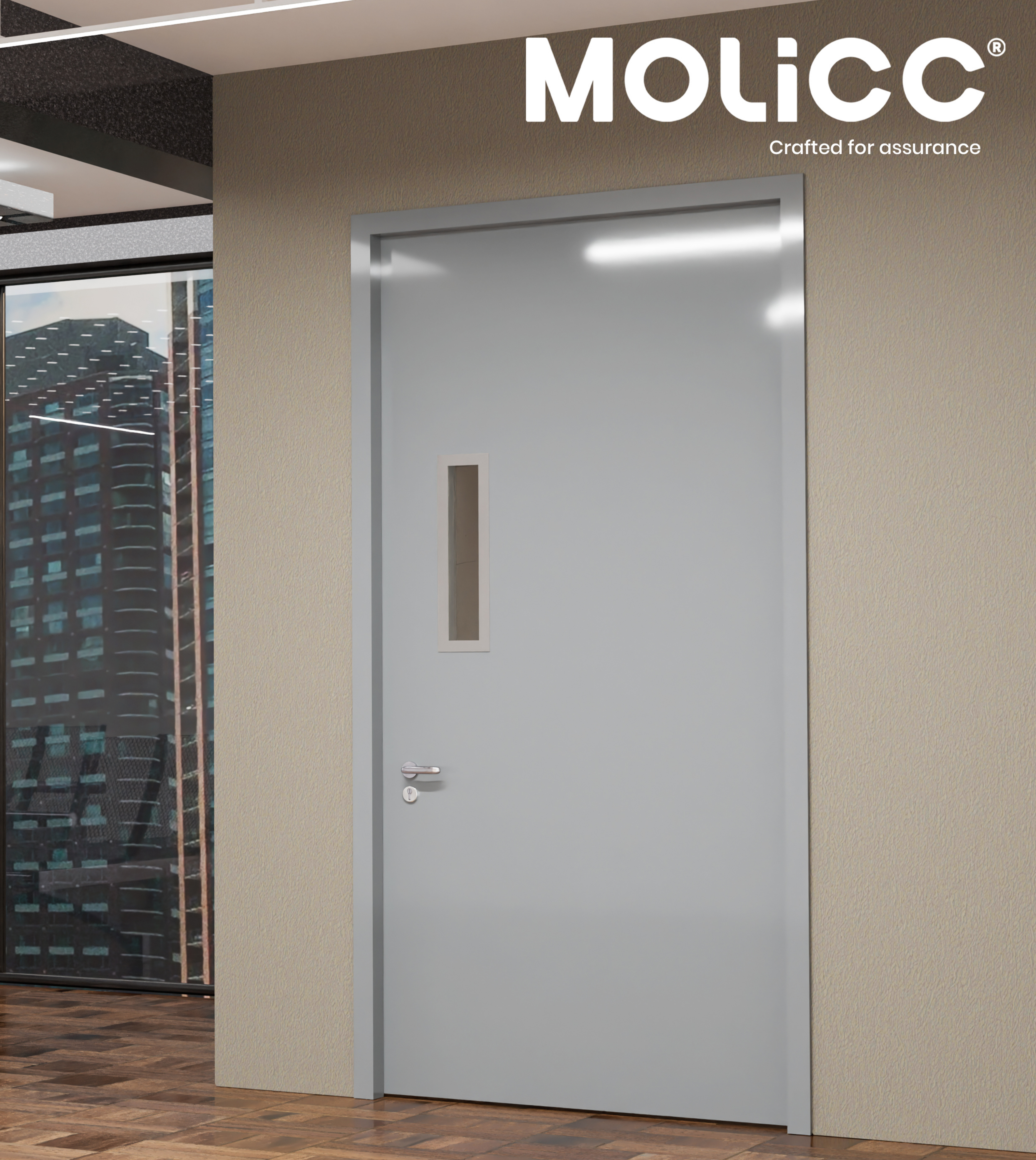


MOLICC®

Crafted for assurance



STEEL DOOR

MOLICC Steel Door is fabricated from high-tensile galvanized steel with reinforced internal structures, offering enhanced resistance to impact, warping, and corrosion.

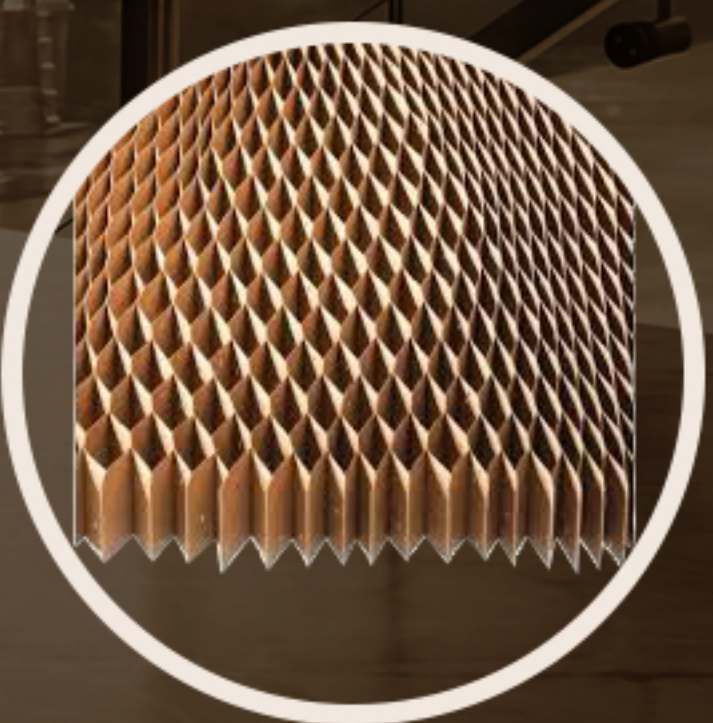
— ideal for demanding commercial, industrial, and institutional environments.

Specification



Ironmongeries & Accessories

- Door Frame
- Door Closer
- 5” Stainless Steel Hinges
- Handle & Mortise Lock
- Door Selector
- Flush Bolt
- Cylinder
- Steel Edge Capping
- Steel Flat Sheet Finish



Honey Comb



1.0mm Steel Plate



Steel Edge

SINGLE LEAF

MAX. DOOR WIDTH	1300MM
MAX. DOOR HEIGHT	3000MM
DOOR THICKNESS	40MM / 45MM / 50MM / 60MM ±
DOOR CORE	HONEY COMB
DOOR LIPPING	STEEL CAPPING
FINISHES	STEEL / PAINT / POWDER COATING
DOOR FRAME	1.2MM STEEL FRAME
VISION PANEL	OPTIONAL

DOUBLE LEAF

3000MM
3000MM
40MM / 45MM / 50MM / 60MM ±
HONEY COMB
STEEL CAPPING
STEEL / PAINT / POWDER COATING
1.2MM STEEL FRAME
OPTIONAL

Ironmongery:



Flush Bolt



5” 4BB Hinge



Lever Handle



Strike Plate

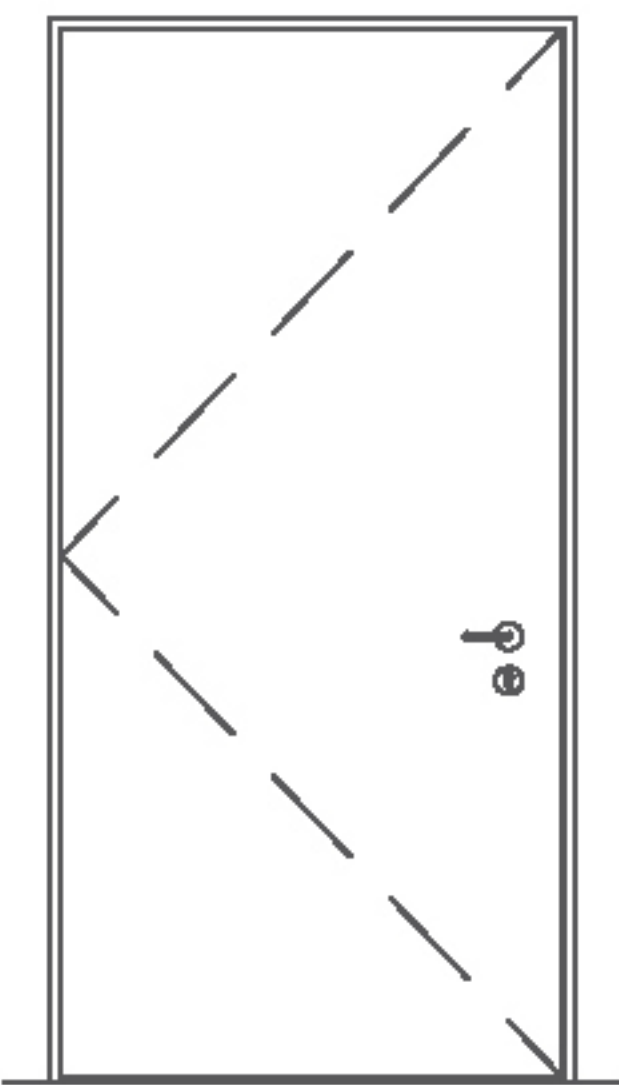


Mortise Sash Lock

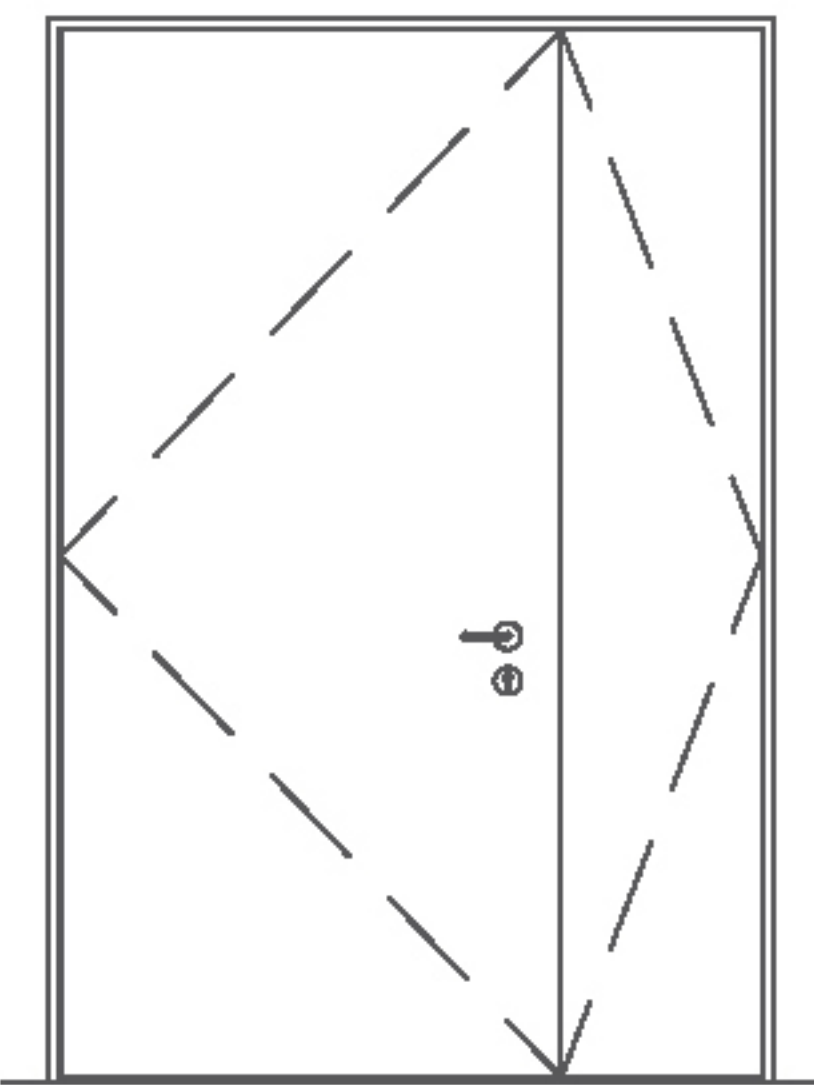


Thumbturn Cylinder

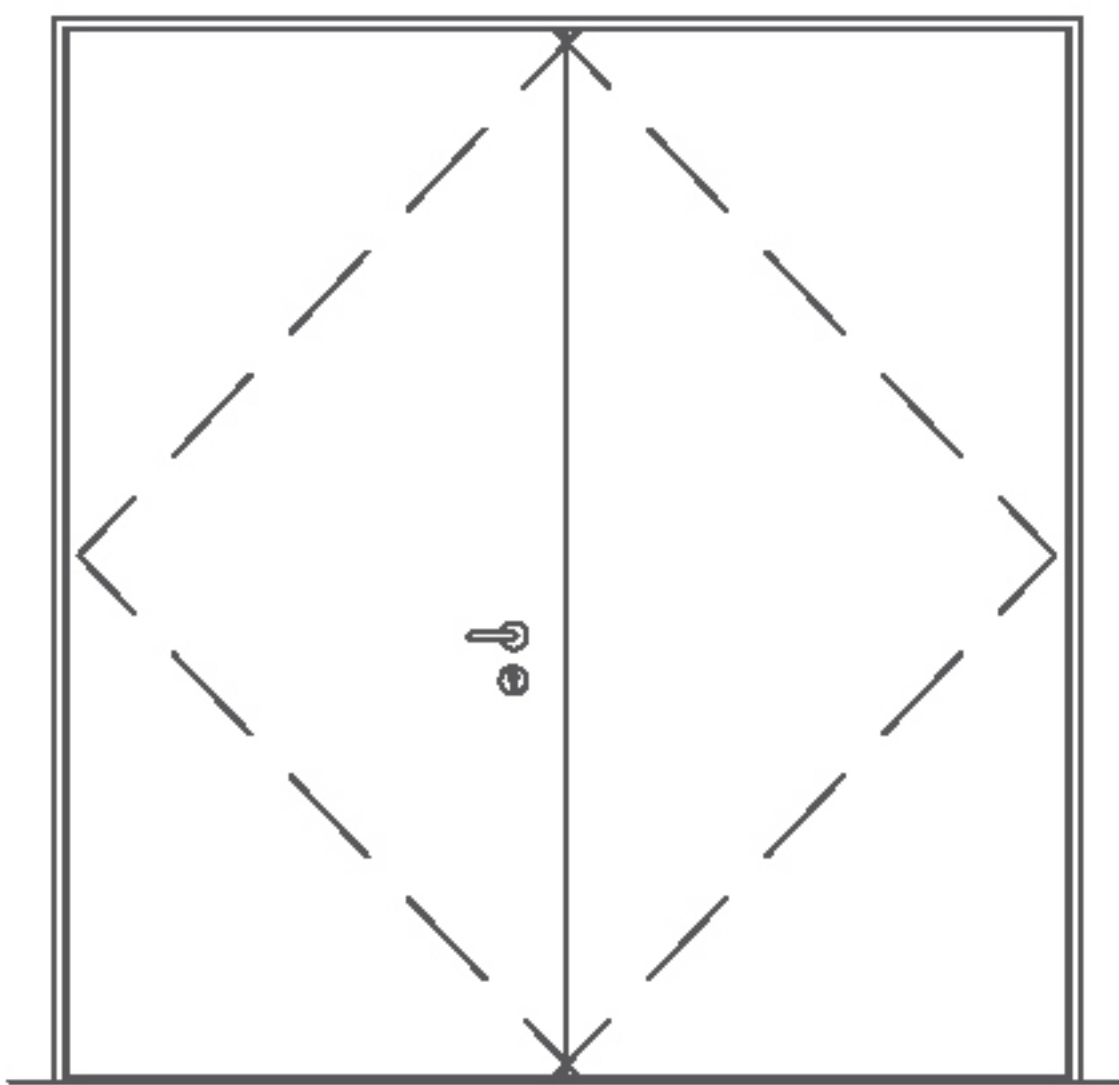
Select Door Type



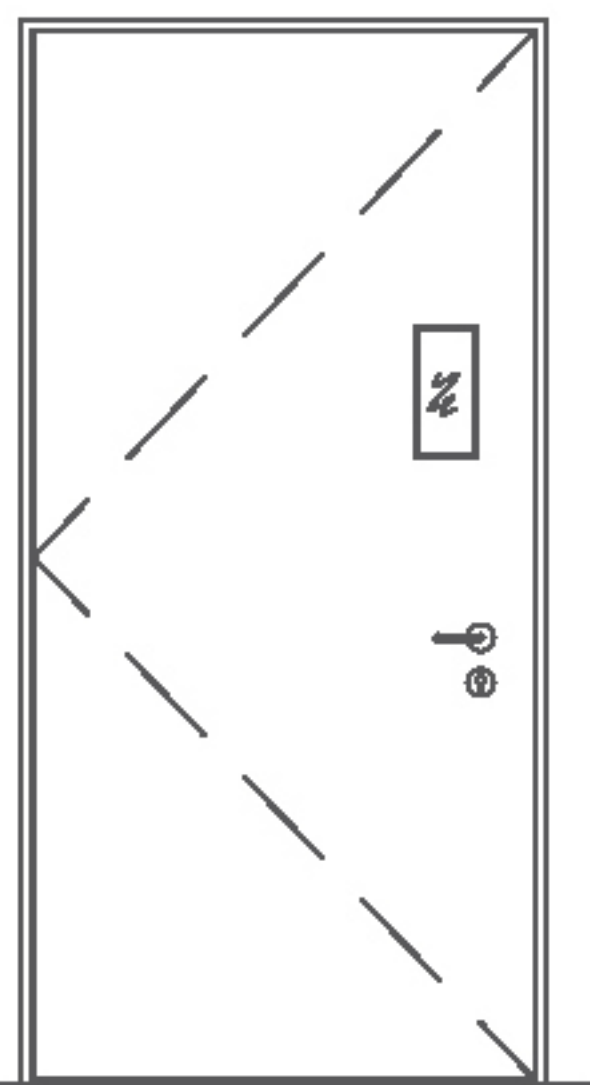
Single Leaf Door



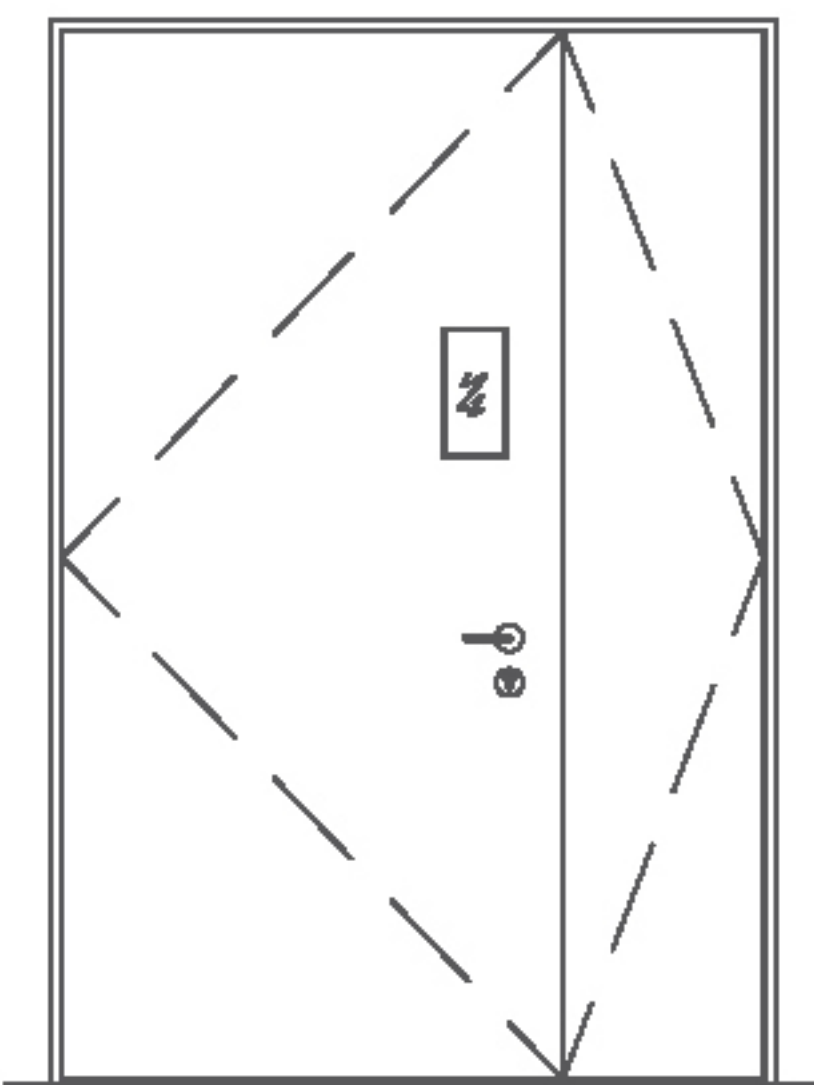
One And Half Leaf Door



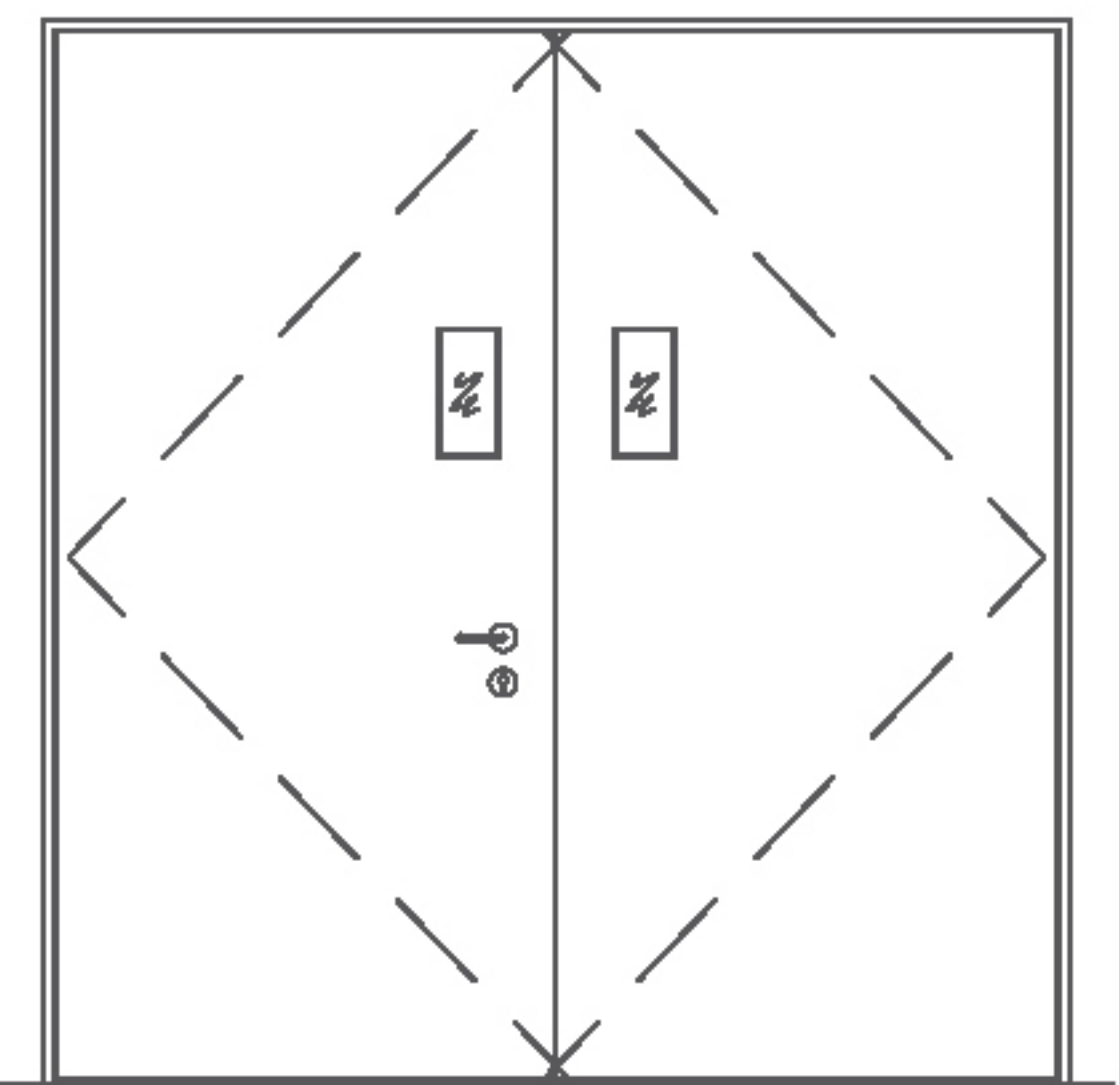
Double Leaf Door



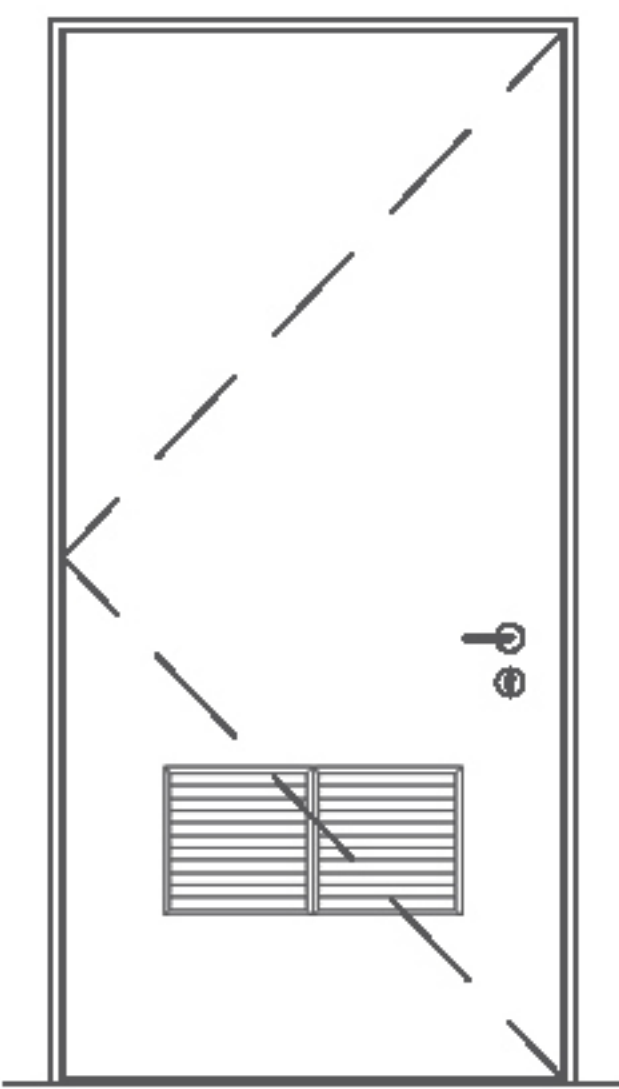
Single Leaf Door With Rectangle Vision Panel



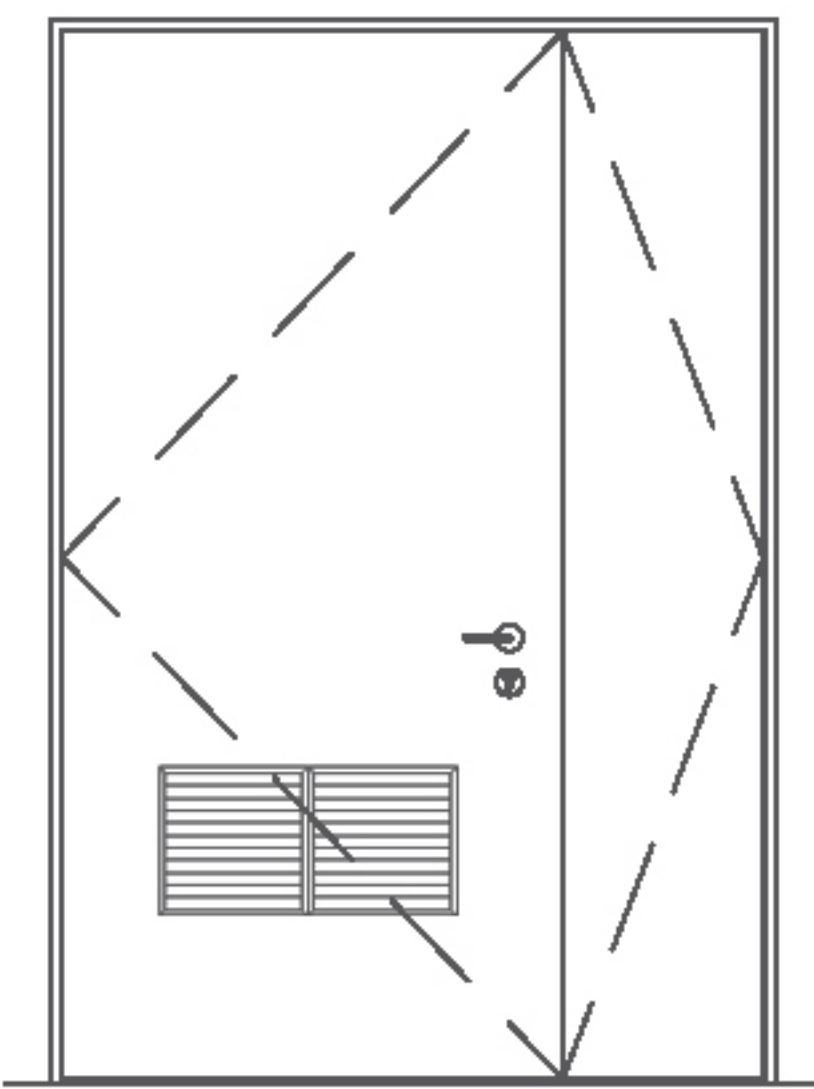
One And Half Leaf Door With Rectangle Vision Panel



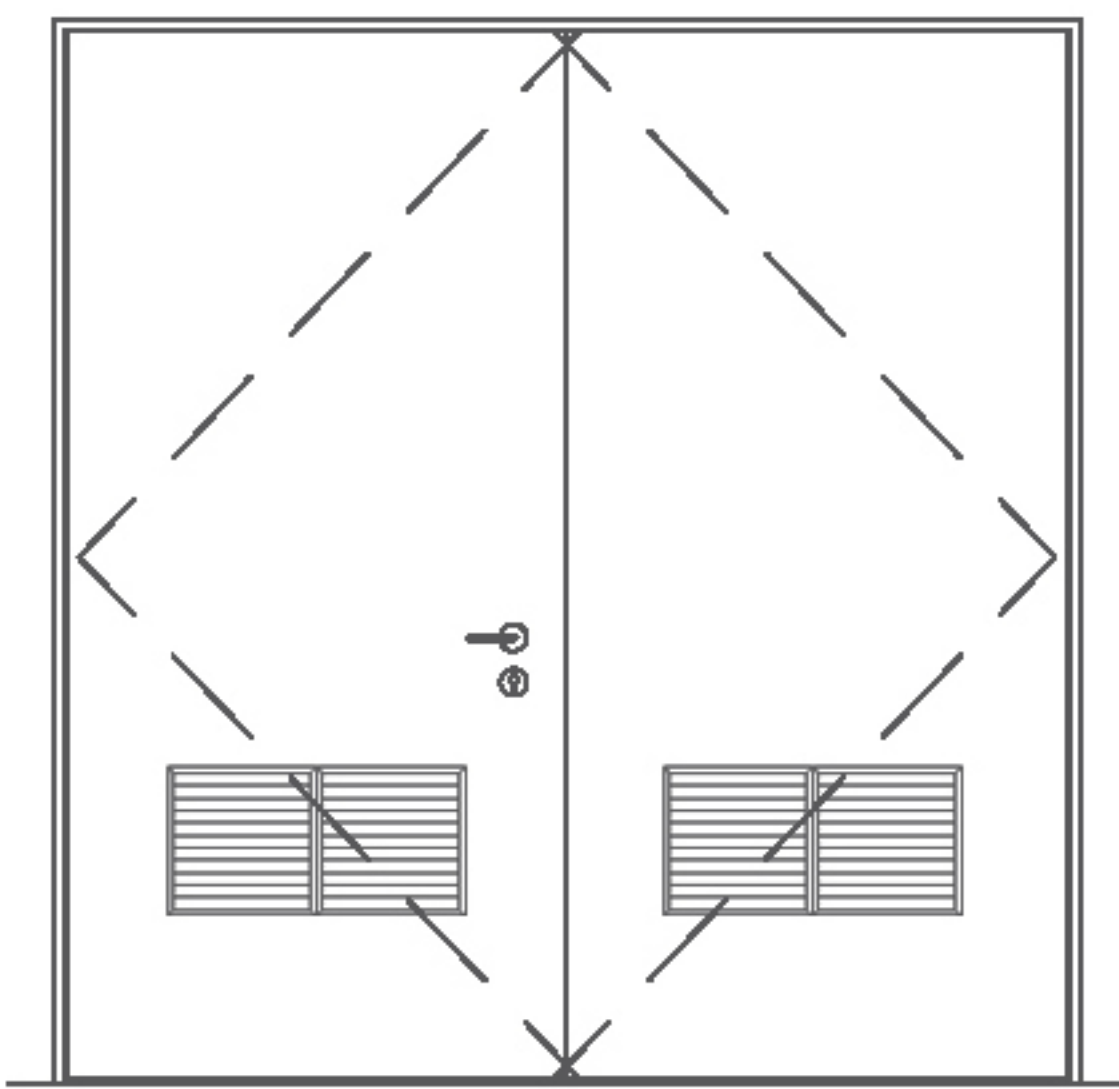
Double Leaf Door With Rectangle Vision Panel



Single Leaf Door With Louver

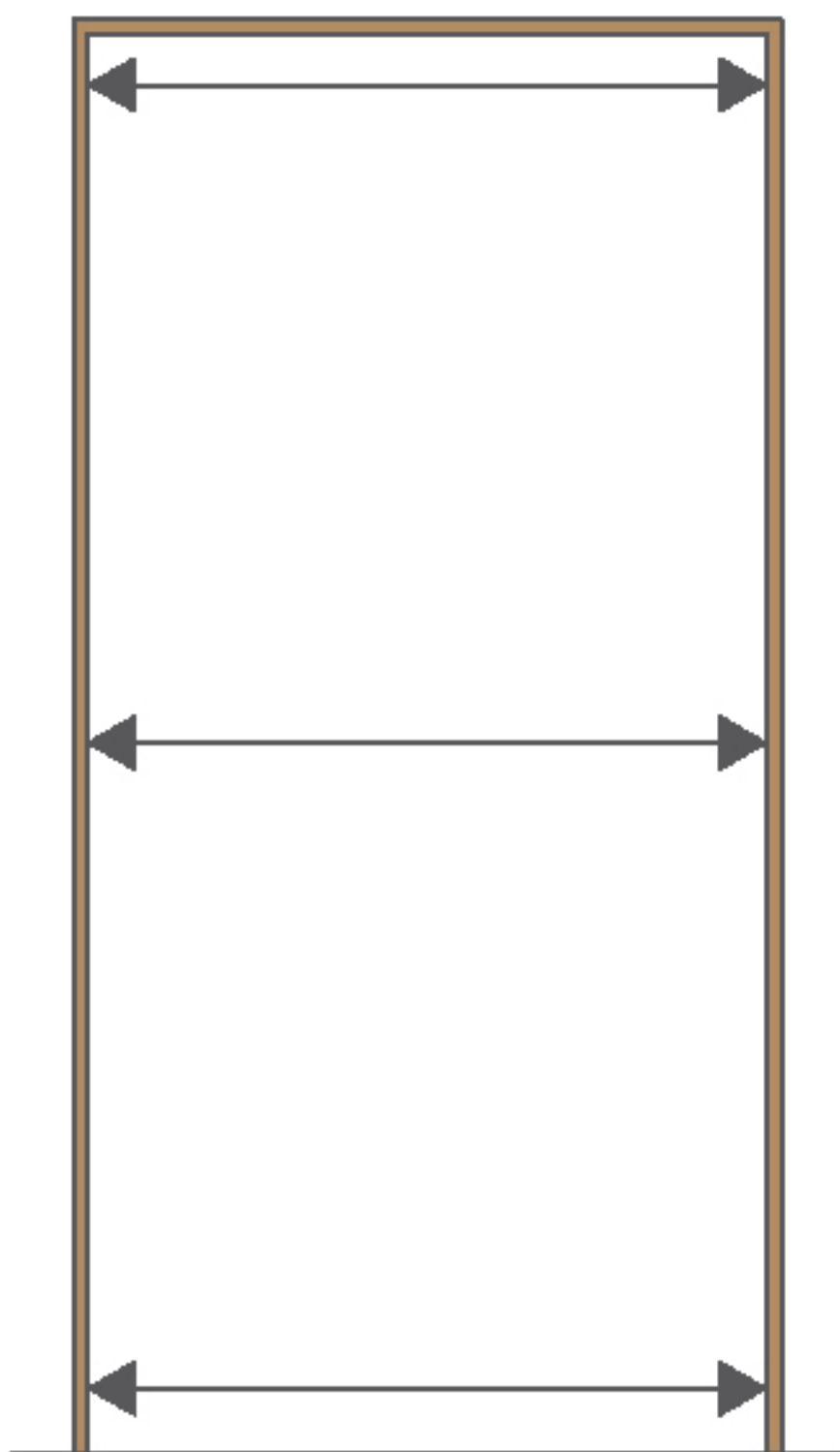


One And Half Leaf Door With Louver

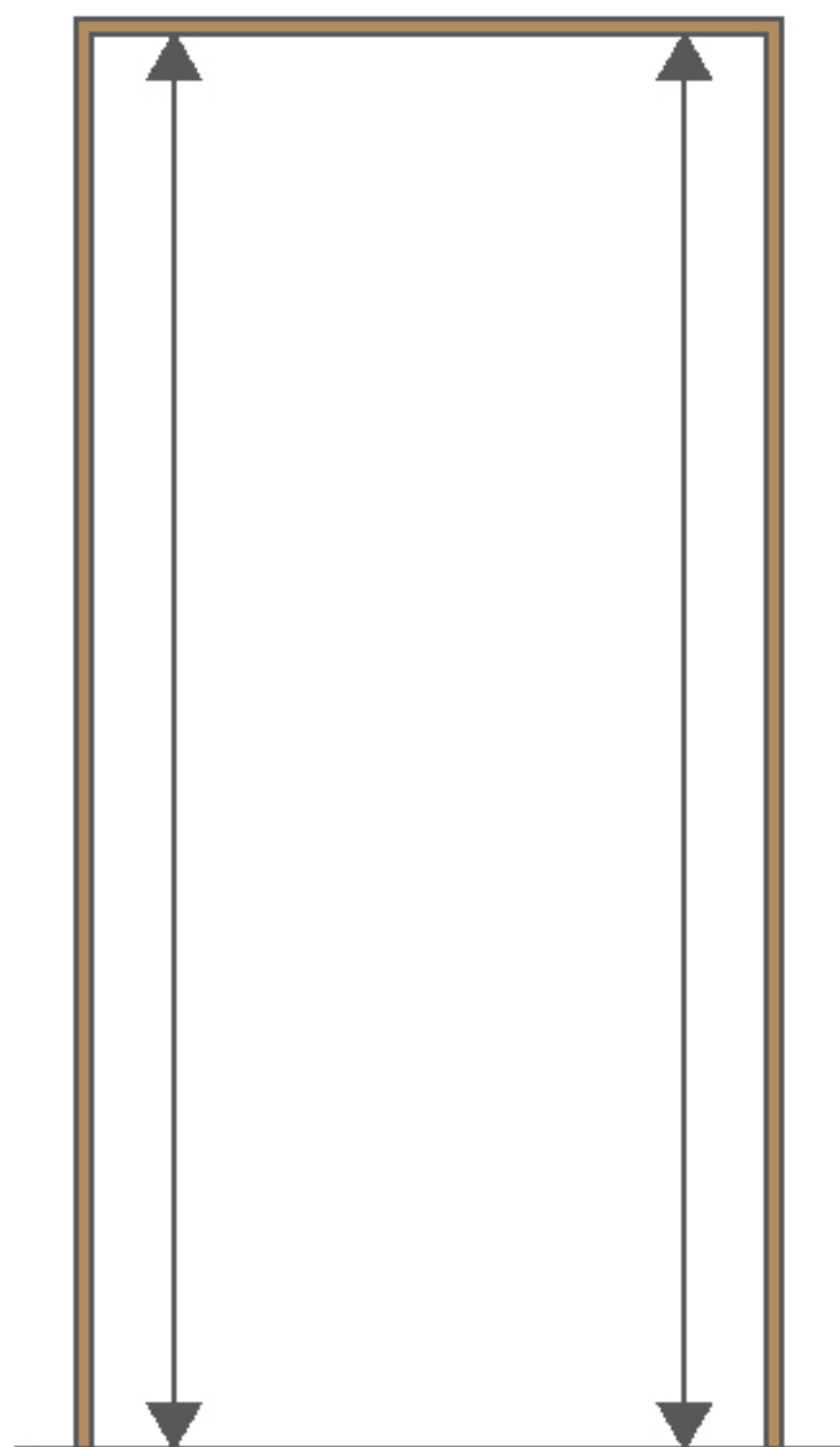


Double Leaf Door With Louver

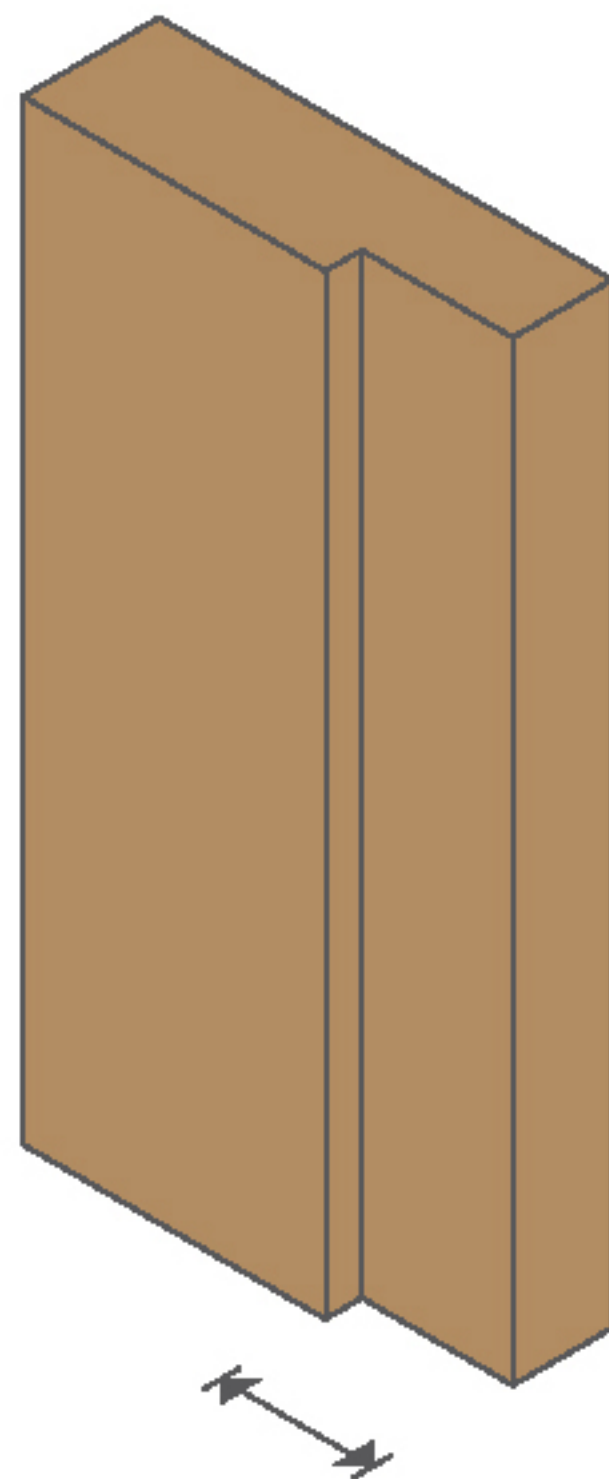
Provide Door Measurement



Door Weight



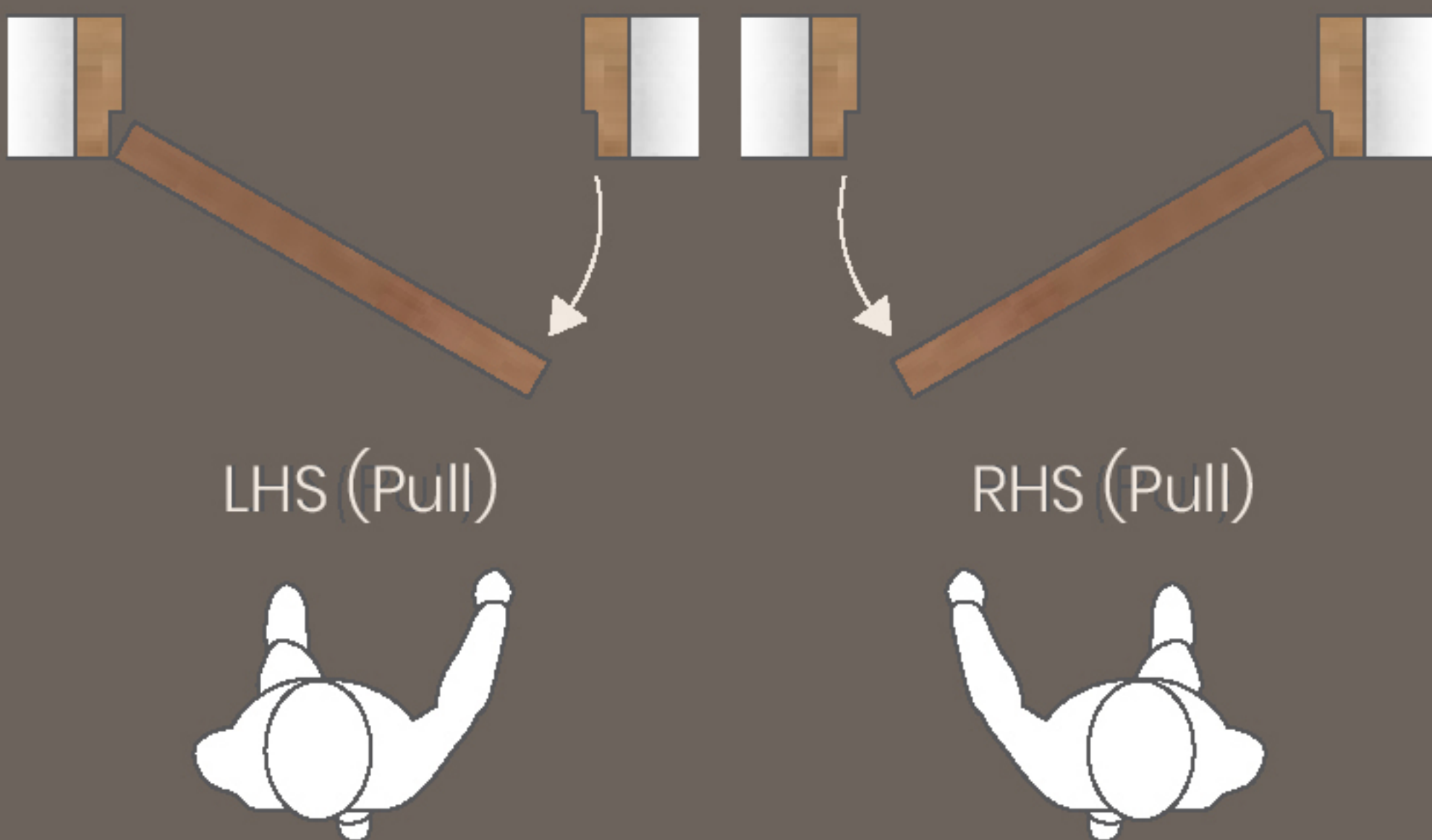
Door Height



Door Thickness

Guidelines

Selecting the correct door type depends on the functional needs and layout of the space. Providing accurate measurements is essential to ensure a proper fit and smooth operation. Following the established guidelines helps achieve a safe, high-quality installation that offers durability, reliability, and visual appeal.



Door always pull toward to you. The side sith the hinges detemines the door opening (Left hand or right hand).



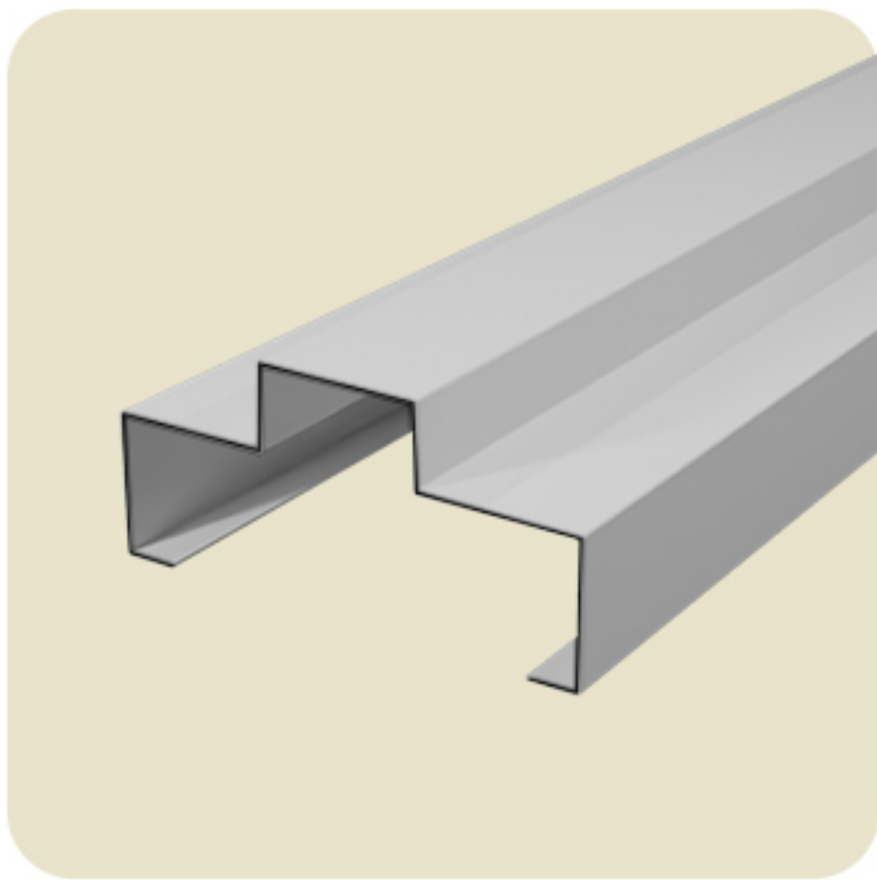
Door Measurement always take inner frame size.

Frame Profile:

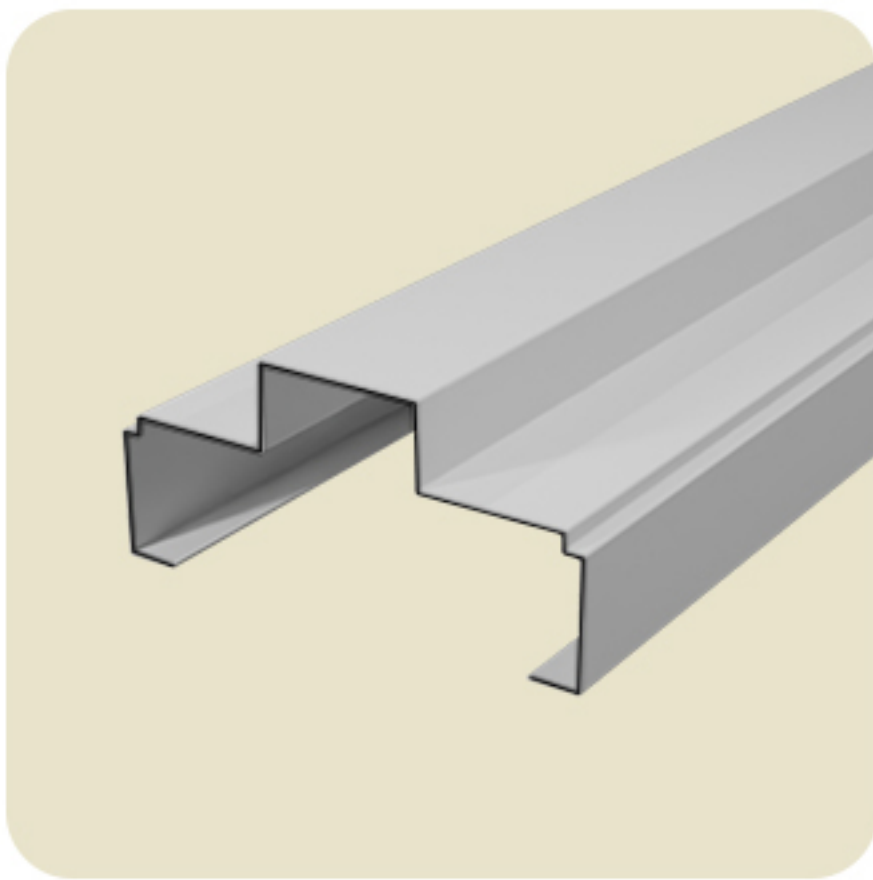
The Molicc Door Frame is a high-performance solution engineered for strength, precision, and durability. Made from Electro-Galvanized (EG) or Galvanized Iron (GI) steel, it offers excellent resistance to corrosion and wear, making it suitable for a range of demanding environments.

Designed for versatility and easy installation, the Molicc Door Frame is ideal for commercial, industrial, and high-security applications. With meticulous manufacturing standards and a focus on quality, it delivers a seamless fit and finish that enhances both functionality and aesthetics.

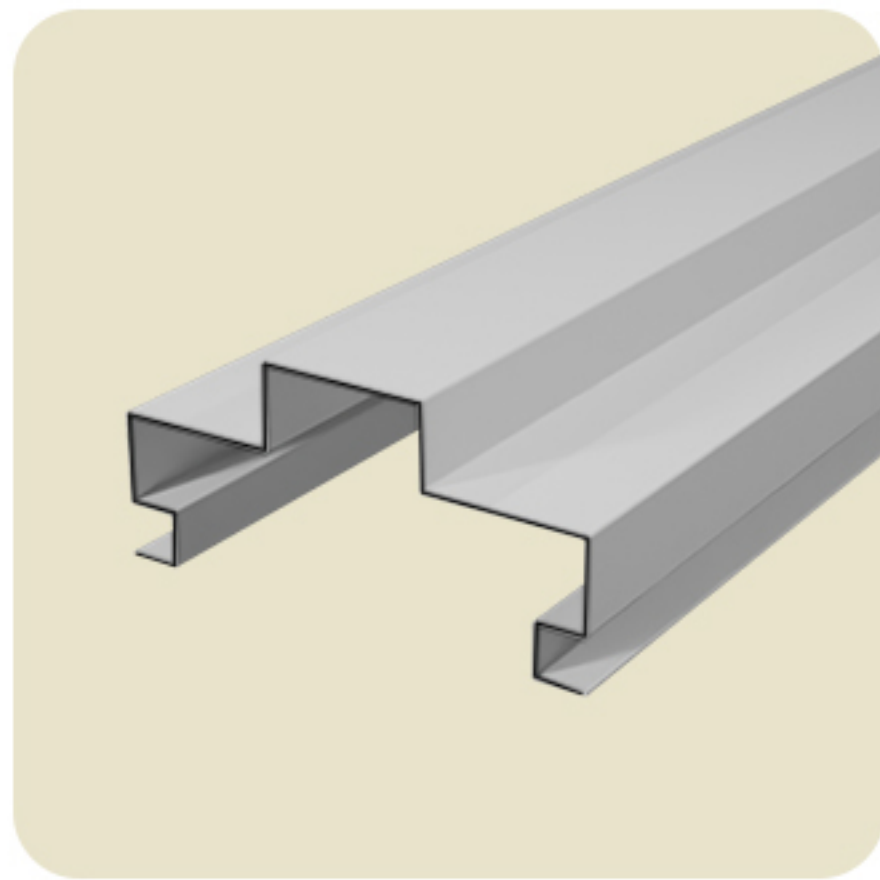
Standard Profile Double Rebated



MF - 7

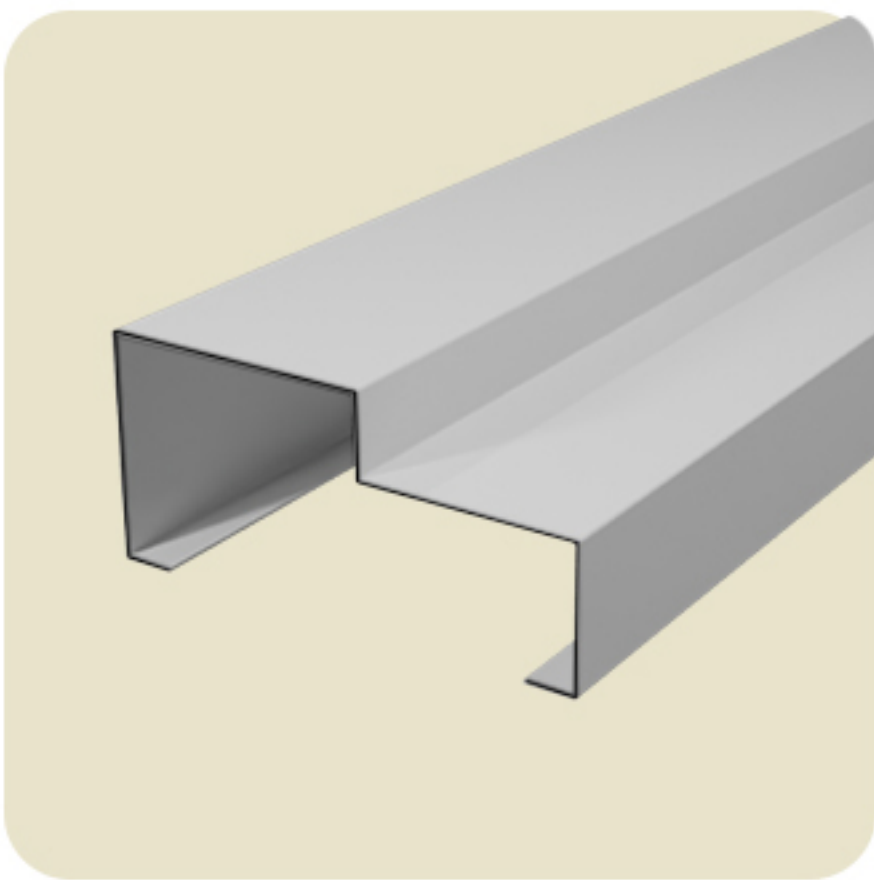


MF - 8

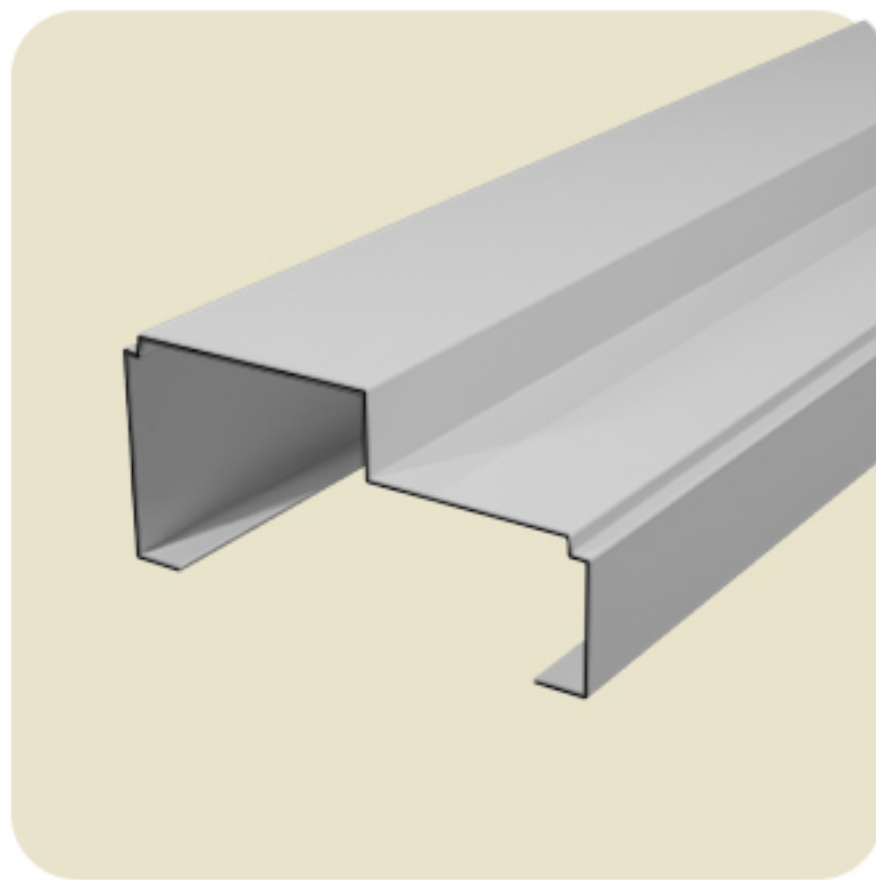


MF - 9

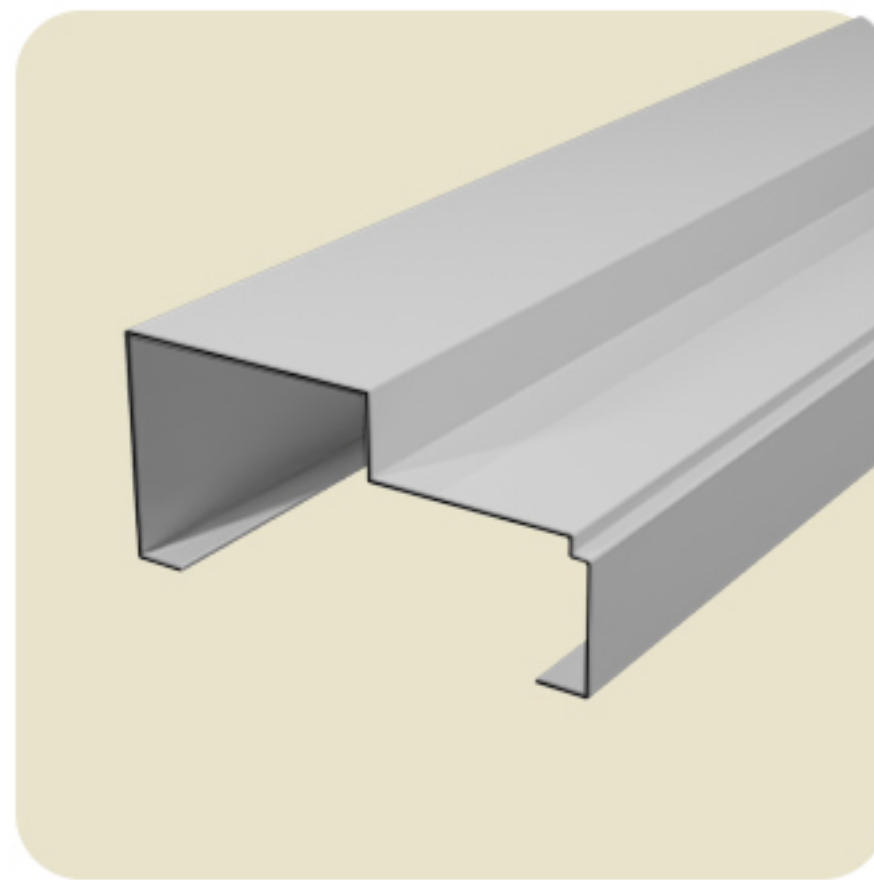
Standard Profile Single Rebated



MF - 1

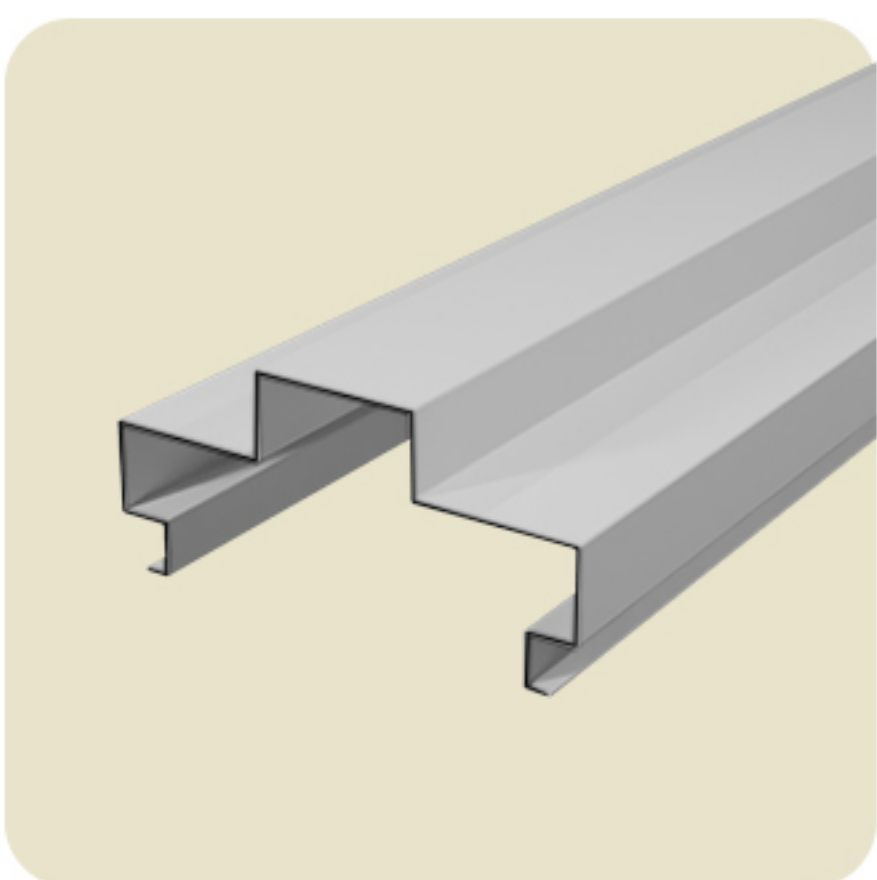


MF - 2

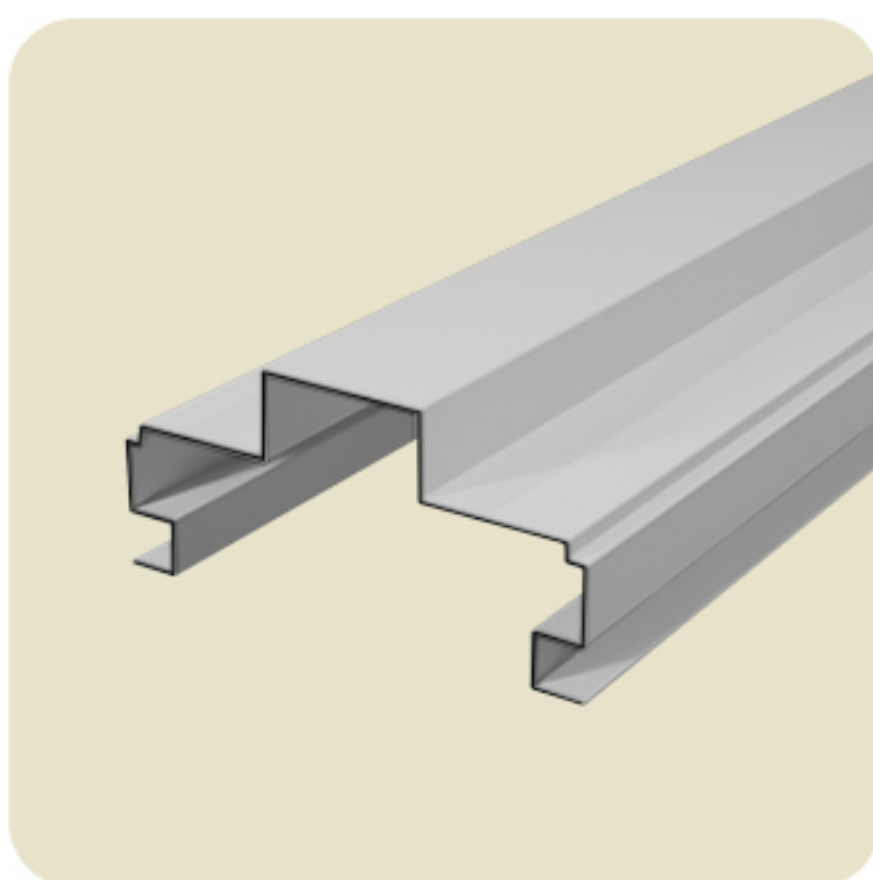


MF - 3

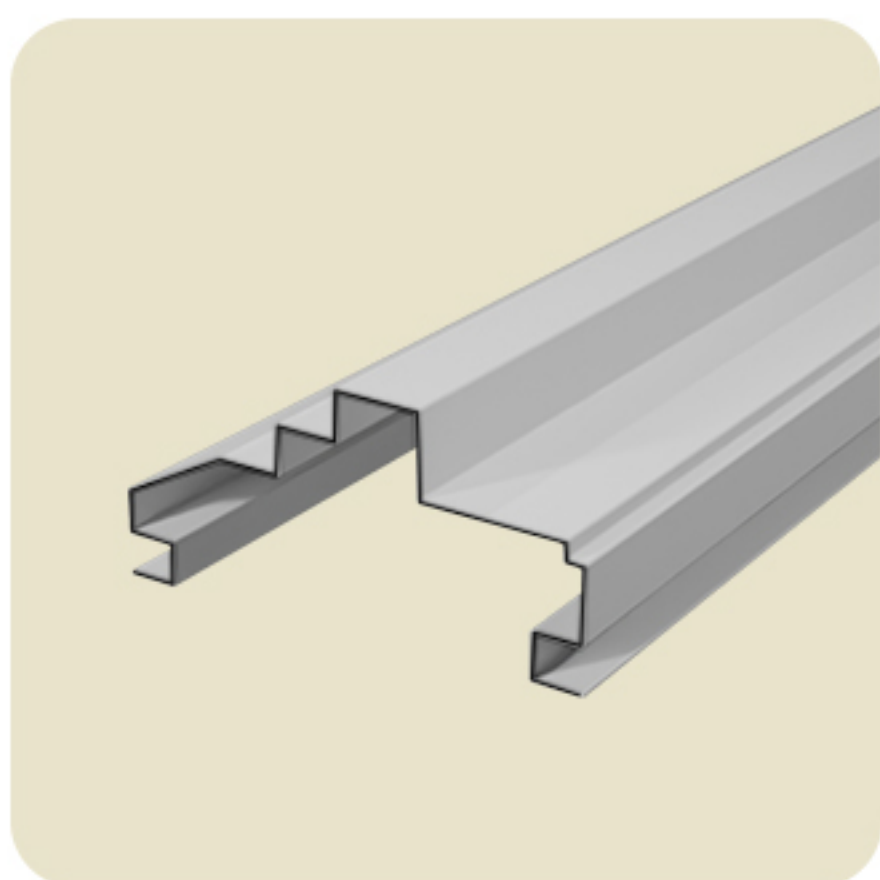
Special Profile Double Rebated



MF - 10

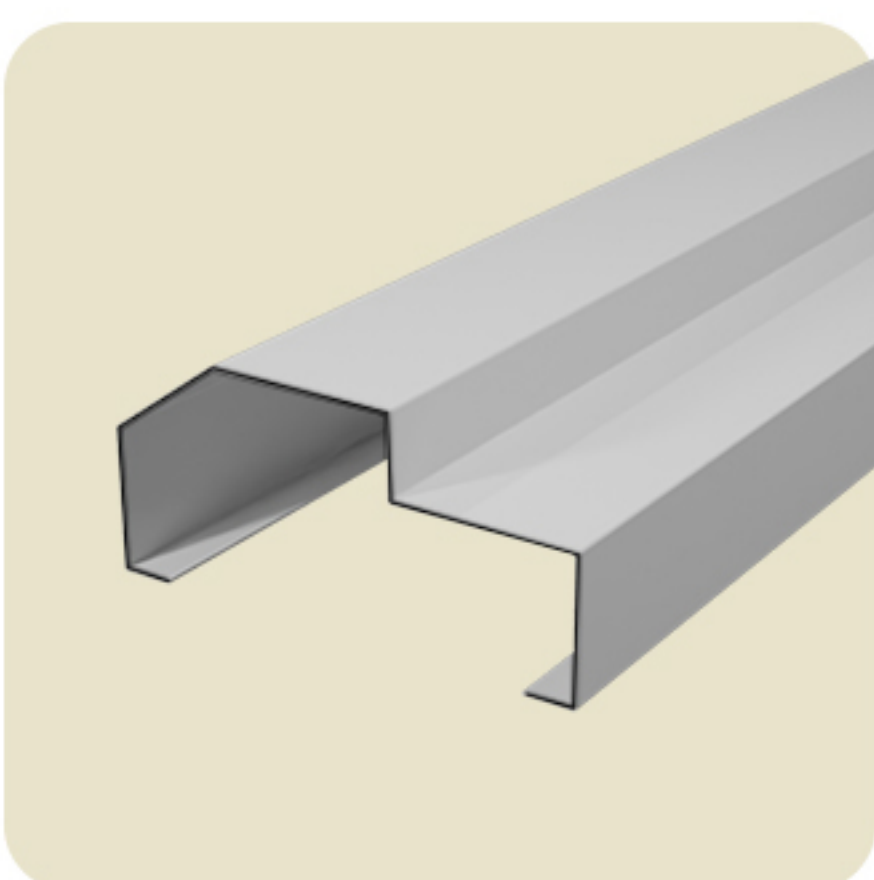


MF - 11

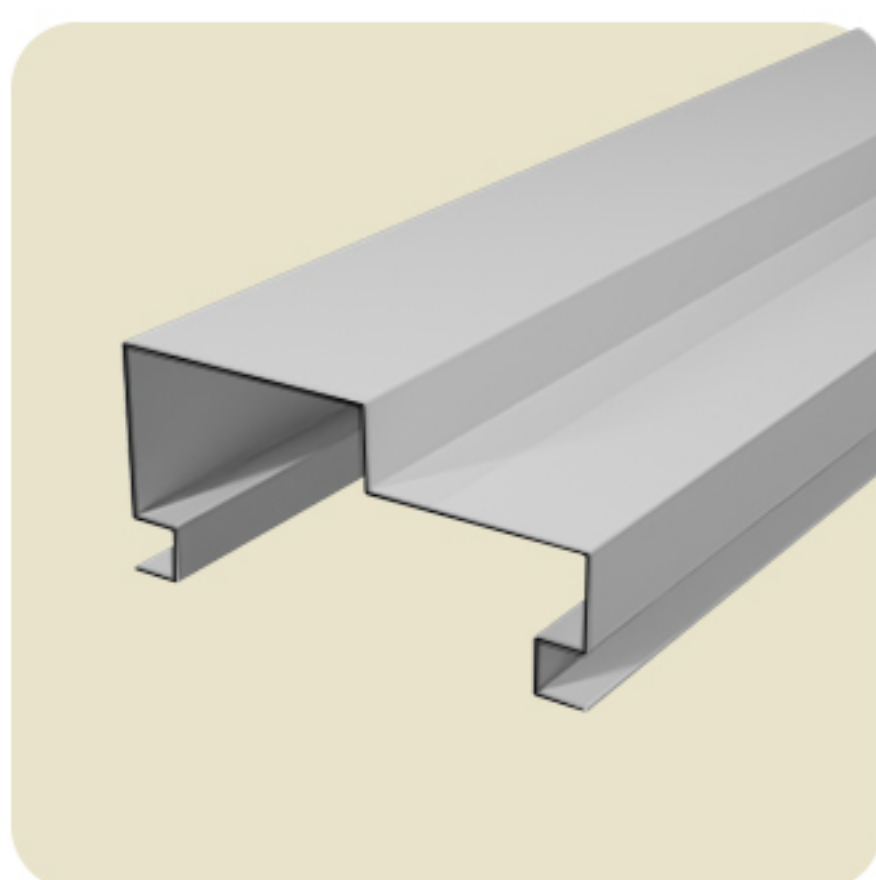


MF - 12

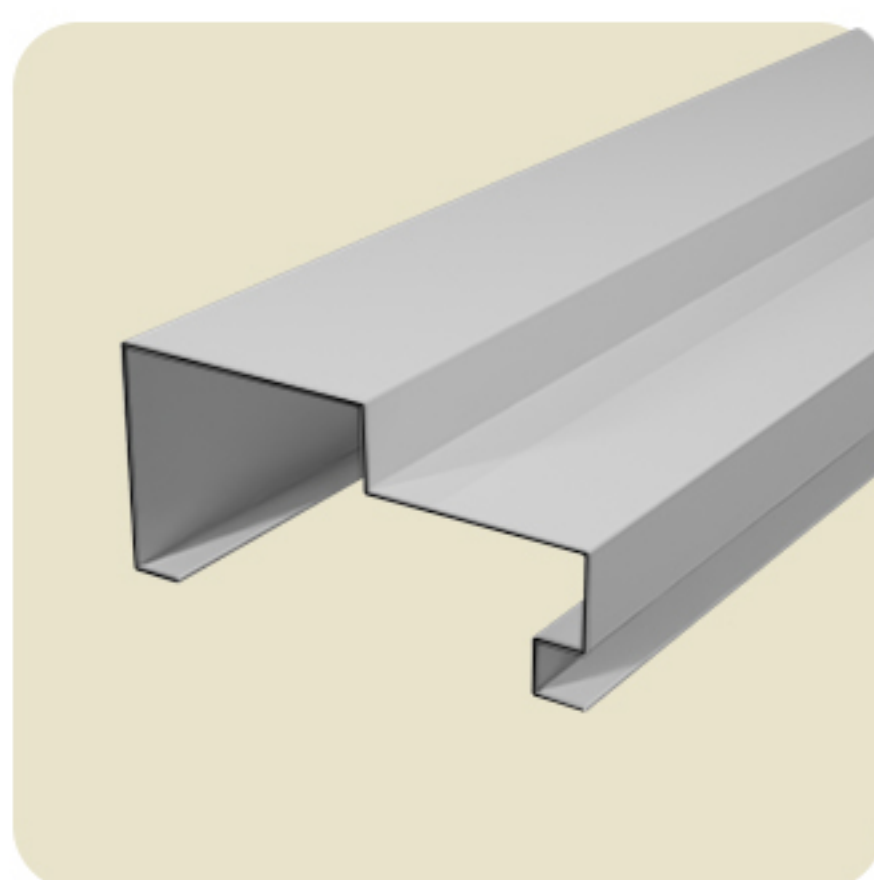
Special Profile Single Rebated



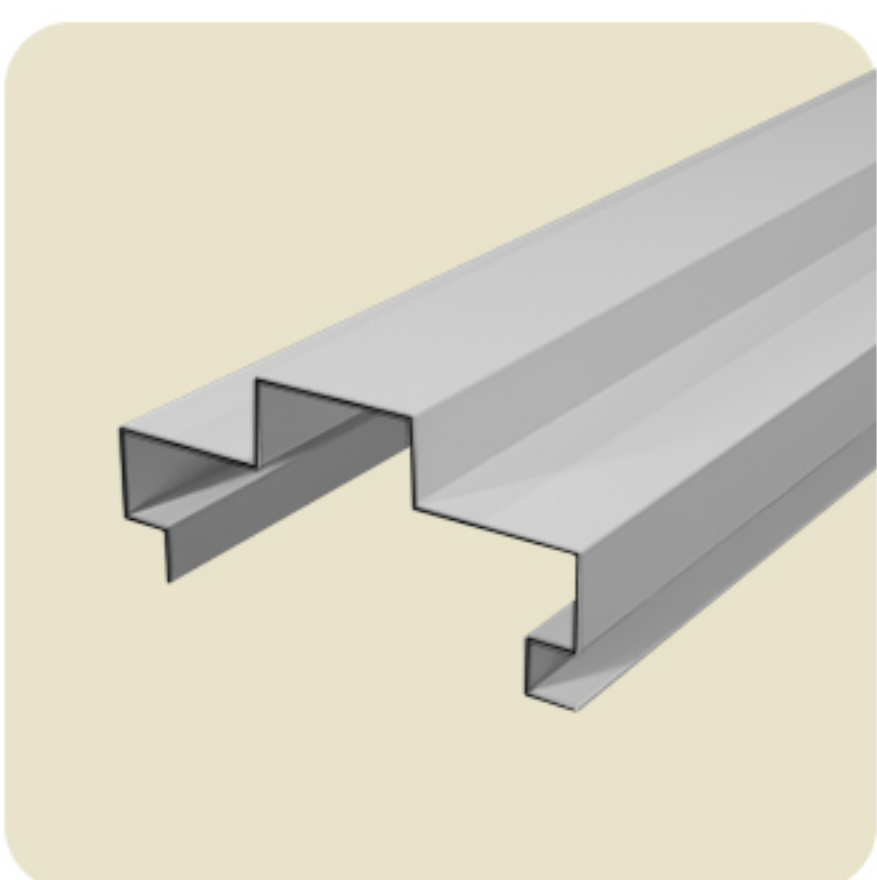
MF - 4



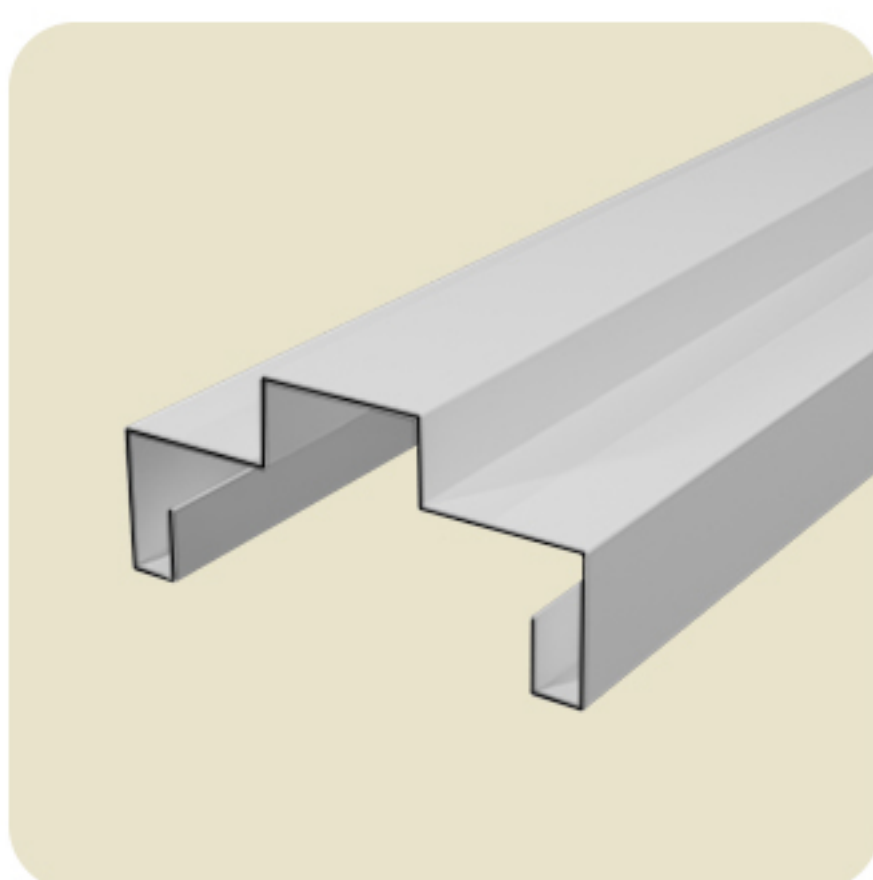
MF - 5



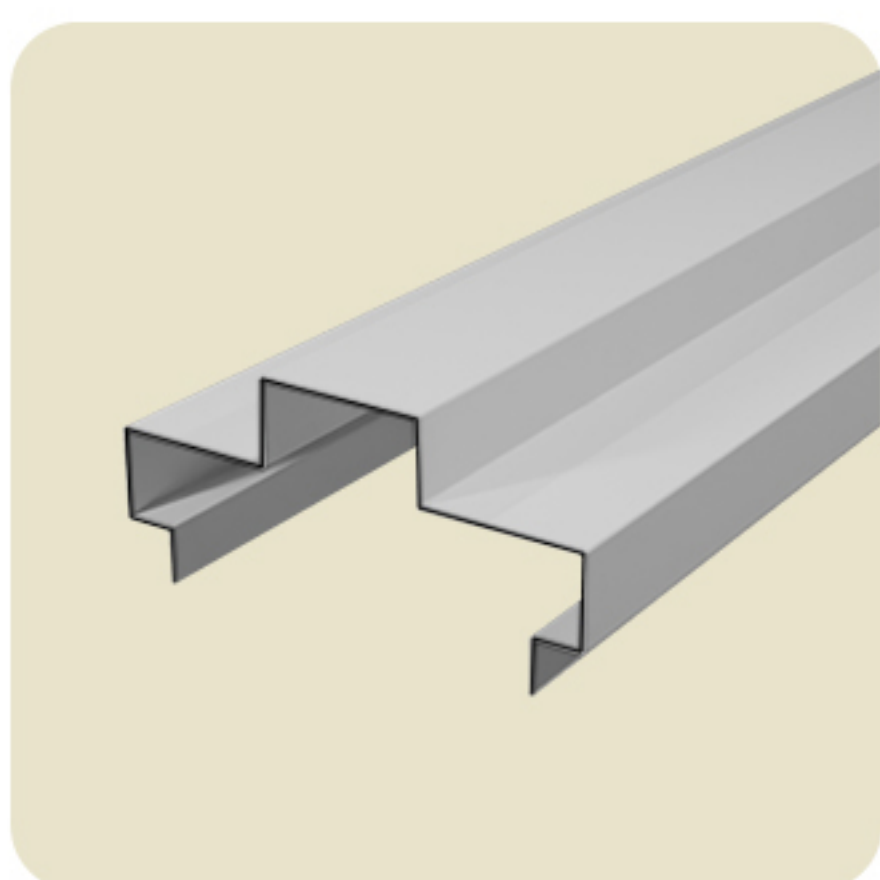
MF - 6



MF - 13



MF - 14



MF - 15

Molicc System Sdn Bhd (483528-K)

No.1405 Jalan Ipoh, Batu 29,
44300, Batang Kali, Selangor, Malaysia.
Email : info@molicc.com
HP : +6010 - 2882687
Tel : +603 - 6075 2687 / 2787
Fax : +603 - 6075 3787

Molicc System Sdn Bhd | Showroom (Petaling Jaya)

No.70, Jln Dato Abu Bakar 16/1, Seksyen 16,
46350 Petaling Jaya, Selangor
HP : +010 - 206 7267